

Restaurant / Cafe / Retail / Fitness / Medical

2701 N CLARK STREET

Northeast Corner of Clark & Drummond

LINCOLN PARK
Chicago | IL

contemporary concepts inc

KAIN
REAL ESTATE

2,009 SF
For Lease



FOR MORE INFORMATION: ALLAN R. PERALES | ALLAN@KAINREALESTATE.COM | (312) 852-5526

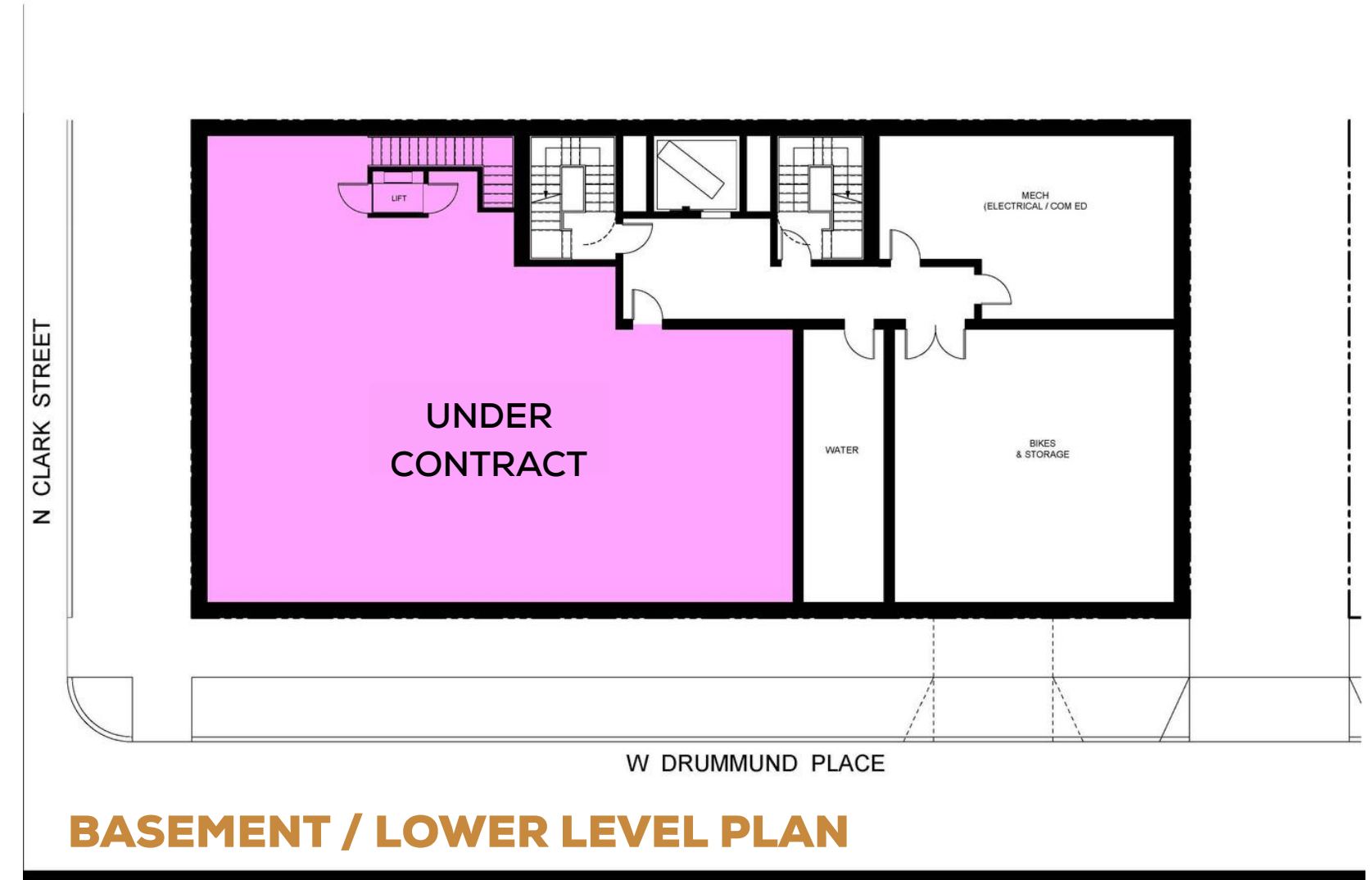
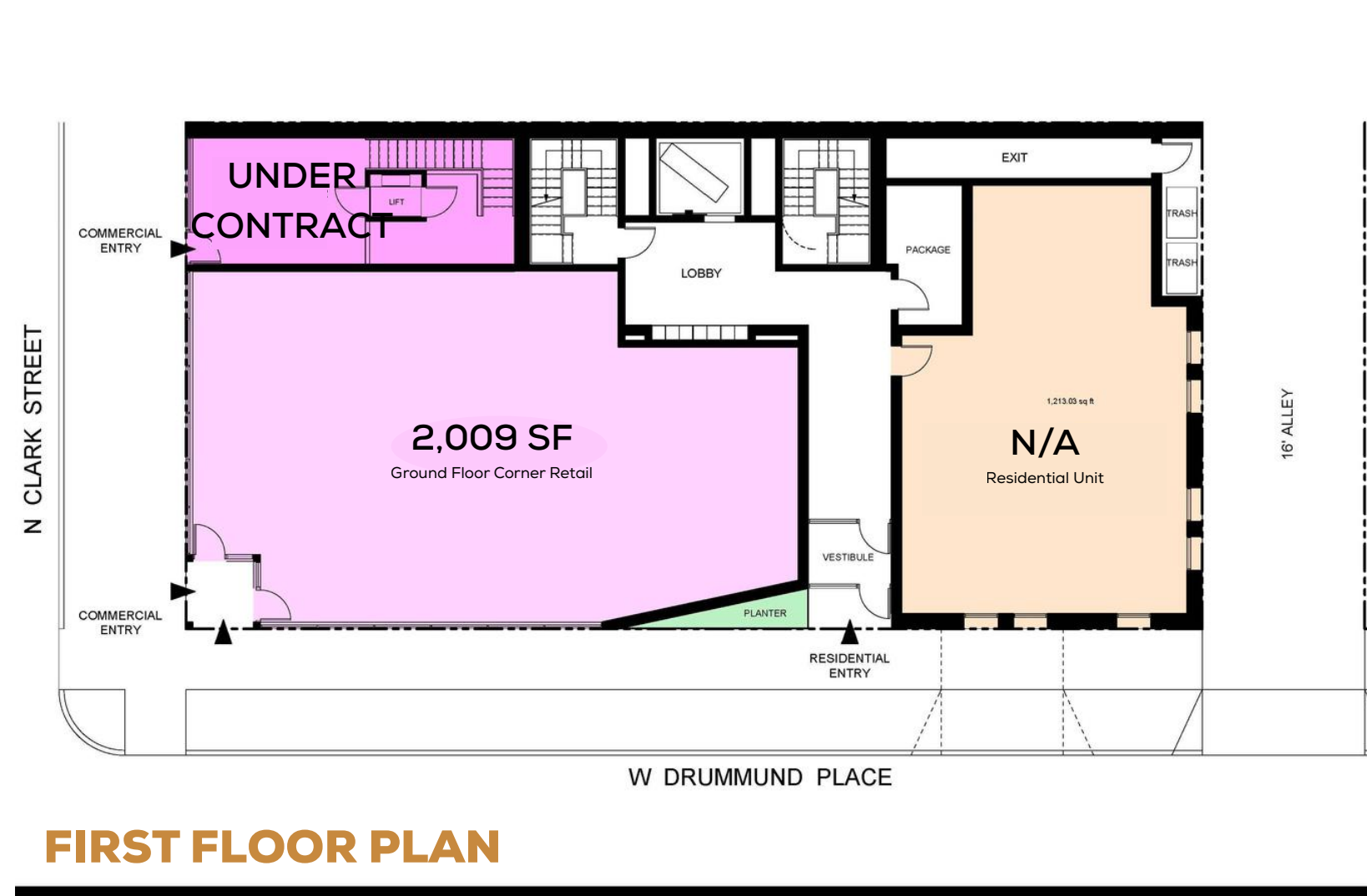
SPACE PLANS

2701 N CLARK STREET

Northeast Corner of Clark & Drummond

contemporary concepts inc

KAIN
REAL ESTATE



COMMENTS

This exciting new mixed-use development is currently under construction, with two additional floors being added above the existing building. Anticipated completion is Summer 2026. The corner retail space is 2,009 SF, available for any type of use. Landlord will deliver a vanilla box and also restaurant infrastructure to include the black iron chase. Outdoor seating is possible along Drummond Place. The corner presence is an ideal location for a company seeking high visibility. The lower level (under contract) has full ceiling heights for a variety of uses including prep, fitness and a cocktail bar. The dedicated entrance is located along Clark St.

THE OPPORTUNITY

2701 N CLARK STREET

Northeast Corner of Clark & Drummond

LOCATION

Northeast Corner of Clark & Drummond

SIZE

Retail A: 2,009 SF (Corner)
Retail B: Under Contract

STATUS

Currently Vacant. Possession in Q1-2026 w/
Opening of 25 apartments above in Summer 2026.

CEILING HEIGHTS

Ground Floor: 11-feet
Lower Level: 9-feet

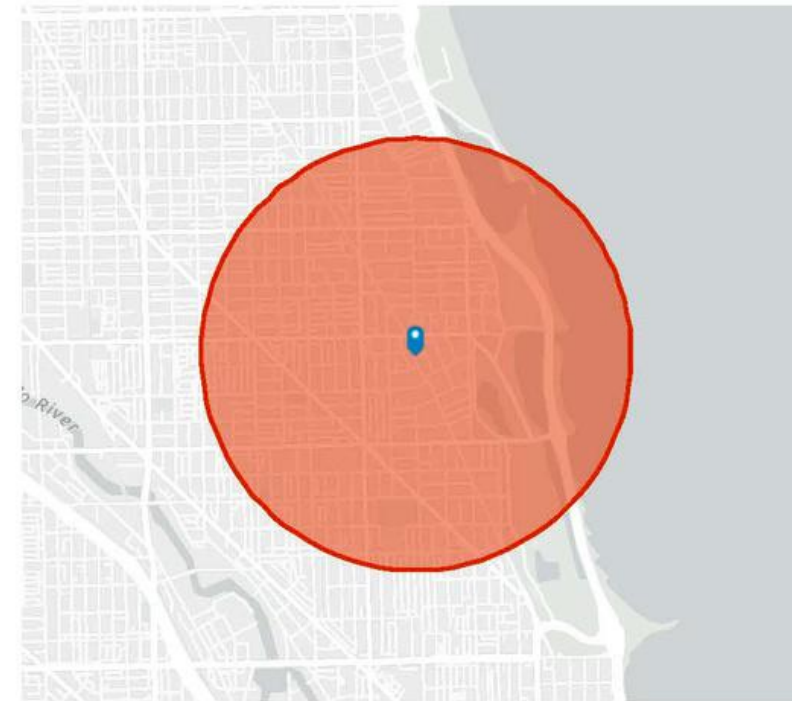
ZONING

B3-5 Zoning (Proposed)
Alderman Timmy Knudsen (43rd Ward)

NEIGHBORING BUSINESSES

Happy Lamb, Target, Barnes & Noble, Starbucks,
Trader Joe's, D Cuisine, Stan's Donuts, McDonald's,
Hotel Versey, Weiner Circle, Neighborhood Hotel

contemporary concepts inc

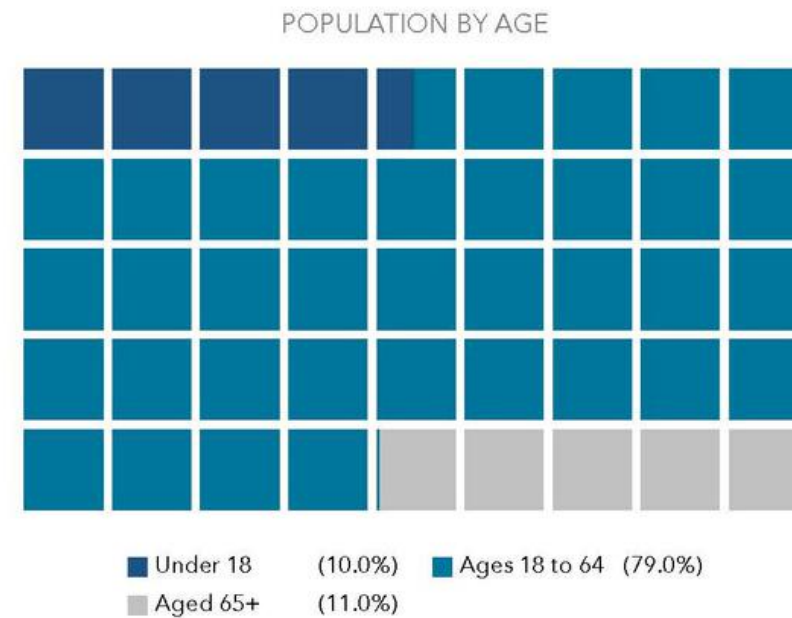
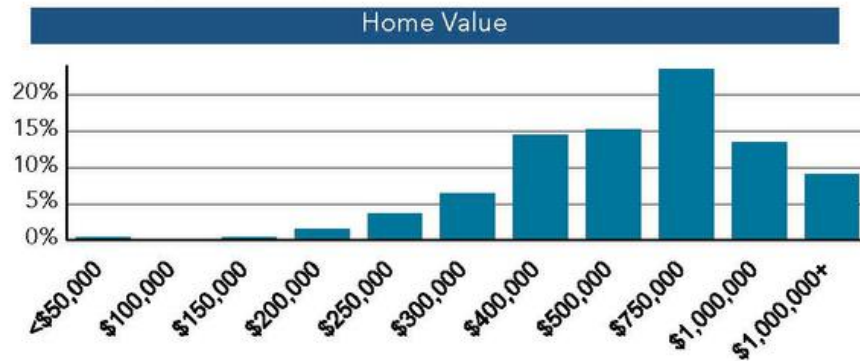
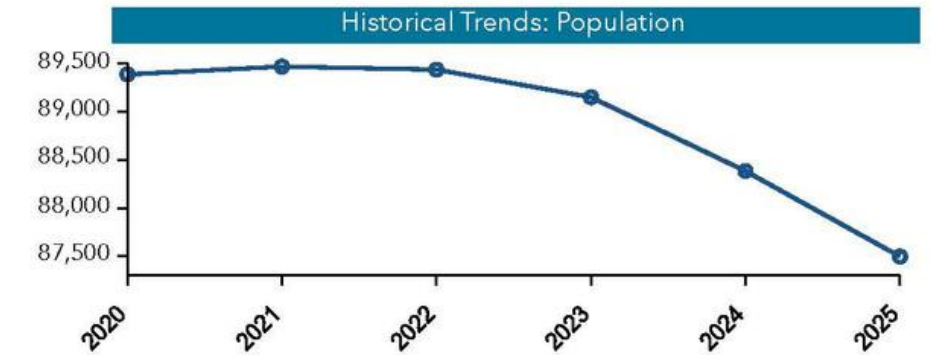


Population Trends and Key Indicators

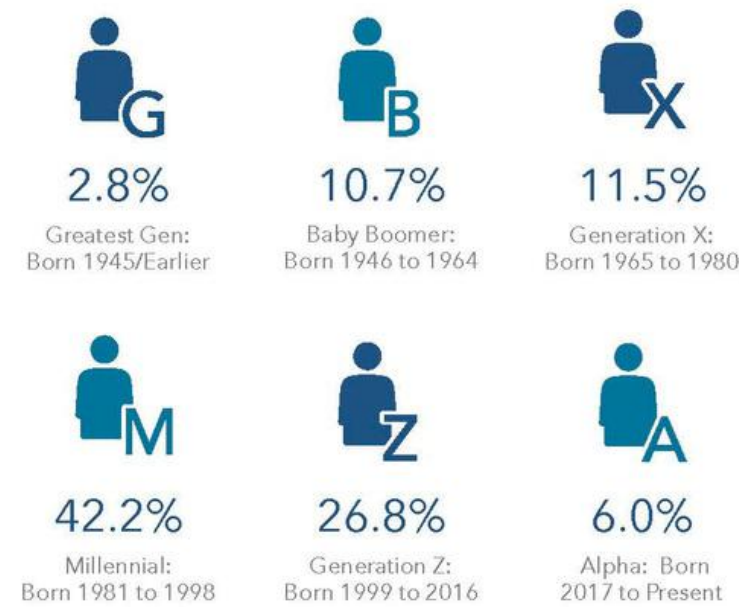
2701 N Clark St, Chicago, Illinois, 60614
Ring band of 0 - 1 miles

87,497	50,888	1.66	31.6	\$109,517	\$580,516	110	64	48
Population	Households	Avg Size Household	Median Age	Median Household Income	Median Home Value	Wealth Index	Housing Affordability	Diversity Index

MORTGAGE INDICATORS



POPULATION BY GENERATION



Source: This infographic contains data provided by Esri (2025, 2030), Esri-U.S. BLS (2025), ACS (2019-2023). © 2025 Esri